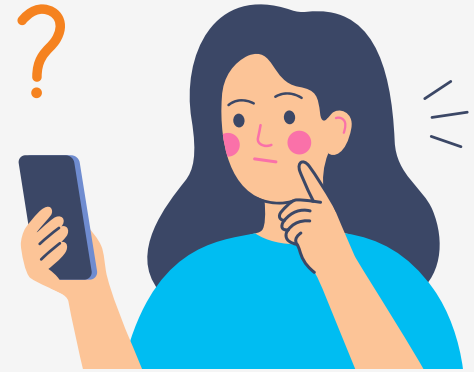




Is my phone smart?

We call phones “smart” based on what they can do. Here are some ways to tell different kinds of phones apart.



Landline phones, cellphones, and smartphones: What to look for



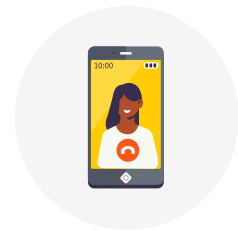
A landline phone:

- Sits on a base
- Needs to be plugged in to work
- Voice calls only



A cellphone:

- Physical buttons
- Voice calls and text messages
- May have apps that don't use the internet, like games or a contact list



A smartphone:

- Large screen that reacts to touch
- Few (or no) buttons
- Voice and video calls, text messages
- Can browse the internet and run programs like a computer can

If you're still not sure what kind of phone you have, call the Link to Care hotline so we can help.

Hotline: **866-757-1832** (TTY: 711) Monday – Friday, 8 a.m. – 5 p.m. Website: LinkToCareWA.org

If you need an accommodation, or require documents in another format or language, please call toll free 866-757-1832 (TTY: 711) 8:00 a.m. to 5:00 p.m., Monday to Friday. Community Health Network of Washington complies with applicable Federal civil rights laws and does not discriminate on the basis of race, color, national origin, age, disability, or sex.